




N R TECH POLYPLAST LLP

COMPANY PROFILE - 2025

Contents

-  **1 Overview**
-  **2 Our Road Map & Organization Chart**
-  **3 Capabilities & facilities**
-  **4 Process Follow & Quality Securing plan**
-  **5 Future plan**

Overview

**Company Name
&
Address**

NR TECH POLYPLAST LLP

797, Thiruvallur High Road, Andersanpet, Nemam,
Chennai – 600124

**Nature of
Business**

**Manufacture of Automotive plastic
parts & Moulds ,**

Plant Area

Plant 1/ Plant 2/ Steel Paint shop
Land Area : 9000 Sq ft / 10000 Sft / 12000 sft
Building Area : 8000 Sq ft & 7000 Sft / 10000 sft

Contact

Mr.PREM KUMAR JESADIAN / Mr.SAMUEL DAVID P

+91 99402 00077 / +91 99626 00077

Overview

Profile

- Establishment on 2013
- TS 16949 : 2019 certified
- Manpower Strength 83

• Business : 2020/21 -10.4 Cr
2021/22 -11.8 Cr
2022/23 – 18.07 Cr
2023/24- 14.94 Cr

- Our customer
– Dong Ah , Bright
Minda Group, TVS

Mould & RM

- Mould
 - Two plate mold
 - Three plate mold
 - Hot runner mold
 - Hot sprue mold

- Raw Material
 - POM
 - ABS & PC ABS
 - PP
 - PMMA
 - Nylon6 & 66
 - HIPS

Equipment

- Moisture Balance
- MFI Tester
- Glossmeter

- Digital Vernier

- Digital Micrometers

- VMS

- Pin Gauges

Our Road Map



PLANT VIEW

ENTRANCE



CONFERENCE ROOM



SHOPFLOOR



WIP STORAGE



ENTRANCE



AIR CLEANING ROOM



Loading area



REDMI NOTE 9
48MP QUAD CAMERA

PAINT SHOP OVER VIEW

Gang Way



Paint Mixing Room



Paint Booth



Oven



Final Inspection area



Quality Lap area



Lazer & Pad Printing area



ASSEMBLY OPERATION



1. Housing Assembly
2. Knob & PNL Assembly



Awards & Certification

**Best Supplier
Award (100% Delivery)
From TAKATA**



2017

**Best Supplier
Award (Achieved PPM)
From TAKATA**



2017

**Best Supplier Award
(100% Delivery & Achieved
PPM) From DONG-AH**



2018

Product details

Hosing Assy, Panel Assy & Brkt, Assy
Customer : Dong AH

Kwid

Kwid

BENZ TRUCK

Knob, Bezel & Ornament
Customer : Mindarika

Moulded Components
Customer : Roki Minda

Moulded Components
ITW & TVS

Moulded Components
Customer : Minda Lighting (Clear Parts)

Moulded Components
Customer : Minda Lighting

LPG Valve Safety Plastic Caps - 22 mm 20 mm



The good quality 22 mm or 20 mm Safety Plastic Cap for LPG Cylinder Valve are our regular product. These White plastic safety caps are suitable for Self-Closing Valve of LPG Cylinder. These valves are of various outlet size i.e. 20mm, 22mm, 21mm etc.

- Accurate dimensions
- Durability
- Effectiveness
- Leak proof nature and a long life.

Product details

Moulded Components
Customer : Bright



Moulded Components
ITW & TVS



Painted Components



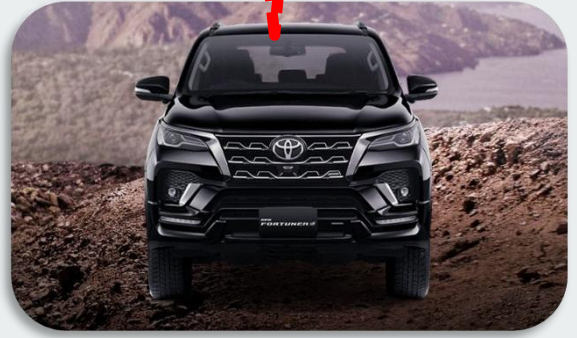
Lazar Etching
Components



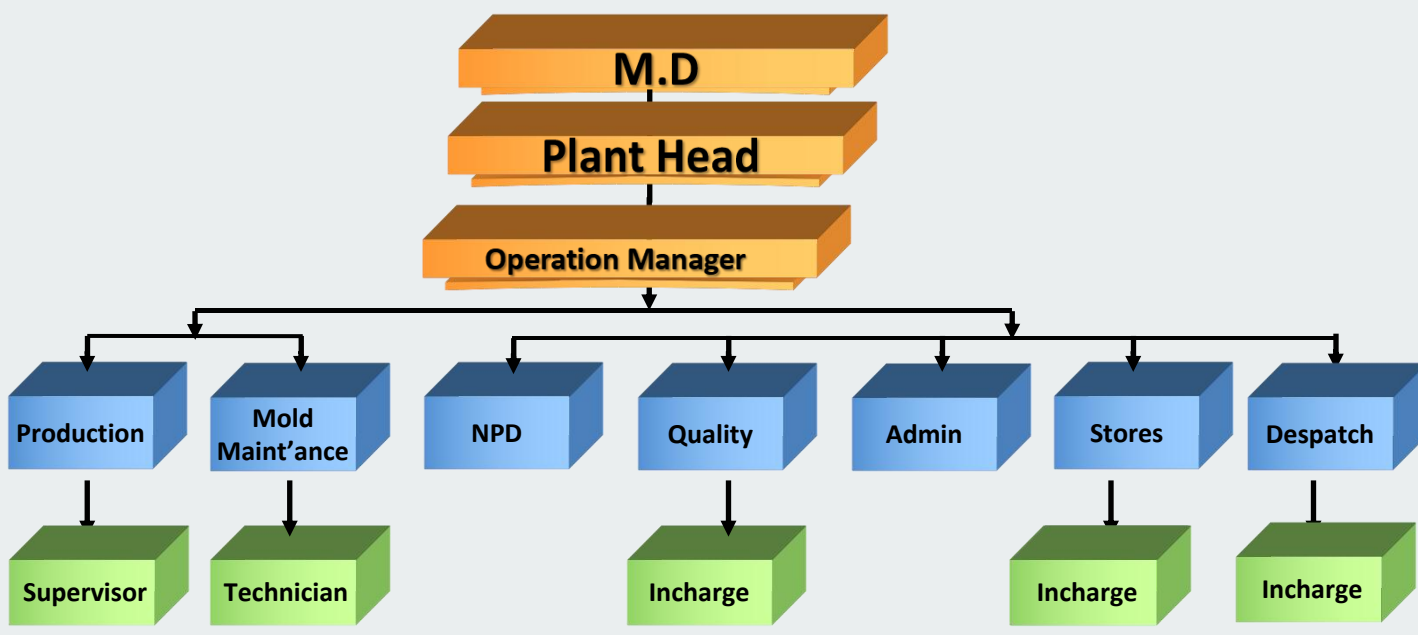
Foil Stamping & Pad printing
Components



Our Product in the Car



Organization Chart



Capabilities & facilities

Capabilities

- 20 Yrs experienced Management Team in Plastic component manufacturing field
- 15 yrs experienced In Prod . by our Production Manager
7 yrs experienced In tool room by our Tool room Manager
- Specialized in Plastic Mould Manufacturing & Engineering Parts processing

Facilities

- 17 Brand New Injection Moulding M/c's with servo Motor accompanied with accessories
- Inward Raw Material quality will be ensured through MFI & Moisture testing
- 2 No Of 125 KVA Genset is installed to ensure m/c running round the Clock

Vertical Inj. Molding Machine

- Machine Tonnage – 150 T



- 150T Machine Spec.

Details	Unit	Spec.
Clamping Force	Tons	150
Platen Size	mm	650x490
Distance Between Tie Bare	mm	500x340
Min. Mold Height	mm	360/400
Max. Open Daylight	mm	560/600
Screw Diameter	mm	35
Max. Shot Weight(PS)	g	123

Inj. Molding Machine – 20 Days Free Load

- Machine Tonnage – 550 T



- 550T Machine Spec.

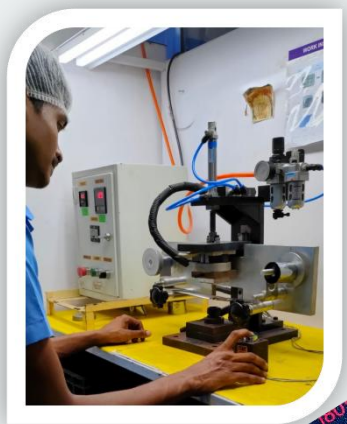
Details	Unit	Spec.
Clamping Force	Tons	550
Platen Size	mm	1170x1170
Distance Between Tie Bare	mm	810x810
Mold Height	mm	260/810
Max. Open Daylight	mm	760
Screw Diameter	mm	84
Max. Shot Weight(PS)	g	1886



Inj. Molding Machine – Accessories

Details	Unit
Hopper Dryer	17 Nos
Dehumidifier	1 No
Mould Temp Controller	7 Nos
Hot Runner Controller (6 zone)	3 Nos
Hot Runner Controller (2 zone)	2 Nos
Chiller	1 No
Genset	125 KVA
Oven	1 No
Compressor	2 Nos
Valve Gate in 550T machine	1 Nos

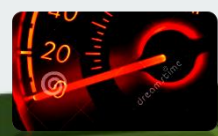
Hot Foiling Machine – 20 Days Free Load



20 Days Free Capa

Machine Spec.

Details	Unit	Spec.
Stamping plate size	mm	150X200
Stamping force	bar	6.5
Job height	mm	10 to 100
Heaters: 3 Nos.	w	400
Foil width	mm	10 to 150
Speed No of strokes	nos	20



Paint Shop Details

- Pad Printing Machine



22 Days
Free
Capa



Laser Etching Machine



22 Days
Free
Capa

- Machine Spec.

Details	Unit	Spec.
Wavelength	mm	1064
Average Power	W	20
Pulse Energy	MJ	1
Q-Switch repetition rate	kHz	10-200
Pulse Width (max)	ns	5-40
Peak power (max)	kw	10



Paint Shop Details

- 3 Coat Paint Both
- Water Booth Paint Shop



Primer Coating Both

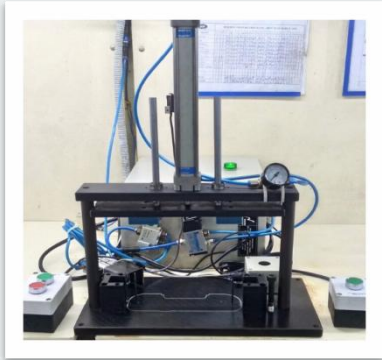
Base Coating Both

Clear Coating Both

Machine Specification details

	Unit	60T	80T	100T	150T(V)	130T	160T	250T	320T	350T	550T
Screw Diameter	mm	28	30	32	40	35	40	45	55	55	84
Shot Weight (PS)	g	64	80	84	123	142	208	296	540	620	1886
Dist, Between tie bars	mm	300/234	320/320	405/360	560x320	360/360	410/410	460/460	560/560	580/580	810/810
Mould Thickness	mm	150/300	180/410	150/400	400/600	150/360	150/410	150/460	200/950	200/580	260/810
Platen Size	mm	435/500	480/480	610/565	740x500	562/562	630/630	701/701	820/820	885/880	1170/1170
No Of Machine	No's	1	2	2	1	2	3	1	2	2	1
M/C Nos		IMM12	IMM01 IMM12	IMM02 MM12	IMM017	IMM03 IMM04	IMM05 IMM06 IMM07	IMM07	IMM08 IMM15	IMM09 IMM16	IMM14

Testing Equipment



XBA /XBB – Housing Assy Unit



XBA/XBB – Foil Pasting checking unit



VMS



Melt Flow Index



Moisture Tester



Weighing Scale



Vernier Caliper



Micrometer



Temperature Sensor

Tool Manufacturing Facilities

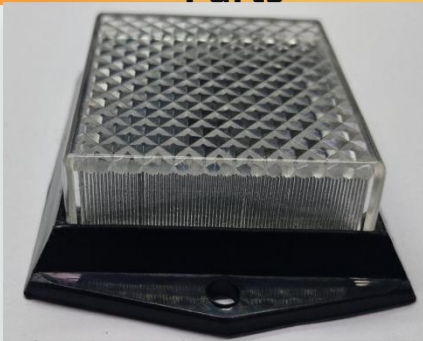
- **NR Tech Jointly Manufacturing new Tool**
 - Part Design, Part Development ,Tool Design and development
 - Tool Trail & Proceeds Optimization
 - Lath. Milling Machine & surface Grinding Inhouse available

Our Manufacturing Tool



Tool Manufacturing Facilities

Our Manufacturing Tool Parts



OUR PROMISE & KEY PRINCIPLES

**“ To Provide The Customers With Real Value,
Outstanding Service, And Exceptional
Performance with Quality & Continuous
improvement, Efficiency.”**